

2019 PRODUCT GUIDE



CAMBRAI COLLECTION

BEAUTY  CRAFTSMANSHIP  DESIGN



THE CAMBRAI COLLECTION TAKES ITS NAME FROM THE ANCIENT TOWN IN FRANCE, WHICH GREW TO PROMINENCE IN THE MIDDLE AGES AS THE CENTER OF LINEN PROCESSING AND WEAVING.

FLAX FROM ALL OVER THE KNOWN WORLD WAS BROUGHT TO CAMBRAI AND TURNED INTO LINEN FABRICS, WHICH WERE PRIZED FOR THEIR COMBINATION OF SOFTNESS AND STRENGTH.

IT IS THIS COMBINATION OF PROPERTIES THAT LED TO THE CHOICE OF FLAX AS A BASE MATERIAL FOR THIS EXCLUSIVE NEW COLLECTION OF SHADE MATERIALS. THESE PATTERNS INTERWEAVE FLAX WITH DECORATIVE ELEMENTS OF BAMBOO, JUTE, REEDS, HEMP AND COTTON SLUB YARNS TO CREATE A STUNNING RANGE OF DESIGNS.

THE RESULT IS A COLLECTION OF SOFT, LIGHT FABRICS, WHICH ARE ALSO TOUGH AND DURABLE ENOUGH TO WITHSTAND YEARS OF SERVICE—SOMETHING NEW AND UNIQUE IN WINDOW TREATMENTS.

PLEASE READ THIS GUIDE CAREFULLY TO UNDERSTAND HOW BEST TO SPECIFY AND ORDER YOUR SHADES AND HOW TO TAKE CARE OF THEM.



MATERIALS REFERENCE

PATTERN NUMBER	PATTERN NAME	PRICE GROUP	COMPOSITION	MAX WIDTH w/Cord Lock	FABRIC WEIGHT (g/m²)	COORDINATED EDGE BINDING COLORS	COORDINATED LINER COLORS		COORDINATED WAND COLOR
							Privacy	Blackout	
ZH-006	ARRAS SAGE	I	100% Flax	58"	110	PALE JADE/SILVER GRAY	NATURAL	SOFT WHITE	BEIGE
ZH-009	ARRAS STONE	I	100% Flax	58"	110	SILVER GRAY	GRAY	SOFT WHITE/DARK LINEN	BRONZE
ZH-011	ARRAS WALNUT	I	100% Flax	58"	110	SATIN BLACK	GRAY	DARK LINEN	BLACK
ZH-148	ARUNDO DUSK	A	90% Flax, 10% Reed	66"	270	SILVER GRAY/PEWTER	GRAY	DARK LINEN	BRONZE
ZH-152	ARUNDO ECRU	A	90% Flax, 5% Reed, 5% Jute	66"	210	IVORY/MARBLE	NATURAL	SOFT WHITE	BEIGE
ZH-212	ARUNDO STONE	A	90% Flax, 5% Reed, 5% Jute	66"	300	SILVER GRAY	GRAY	DARK LINEN	GRAY
ZH-147	ARUNDO SUNSET	A	90% Flax, 10% Reed	66"	270	DARK TAUPE	BEIGE/ESPRESSO	DARK LINEN	BRONZE
ZH-199	BATISTE DARK*	B	95% Flax, 5% Bamboo	58"	250	DARK TAUPE	GRAY	DARK LINEN	BRONZE
ZH-200	BATISTE LIGHT*	B	95% Flax, 5% Bamboo	58"	250	MARBLE/SILVER GRAY	NATURAL	SOFT WHITE	BEIGE
ZH-169	CARRE DUSK	A	90% Flax, 10% Bamboo	66"	390	SABLE	BEIGE	BEIGE	BRONZE
ZH-170	CARRE EARTH	A	90% Flax, 10% Bamboo	66"	390	COPPER TEAL	BEIGE/ESPRESSO	BEIGE/DARK LINEN	BRONZE
ZH-208	CARRE ECRU	A	90% Flax, 10% Bamboo	66"	390	IVORY/MARBLE	NATURAL	SOFT WHITE	BEIGE
ZH-143	CHAMBRAY DUSK*	A	90% Flax, 10% Jute	58"	110	PEWTER	GRAY	SOFT WHITE	BRONZE
ZH-145	CHAMBRAY ECRU*	A	90% Flax, 10% Jute	58"	110	IVORY/MARBLE	NATURAL	SOFT WHITE	BEIGE
ZH-144	CHAMBRAY STONE*	A	90% Flax, 10% Jute	58"	110	SILVER GRAY/BRONZE	GRAY/BEIGE	DARK LINEN	GRAY/BRONZE
YW-010	ELEGANZA DARK	B	85% Flax, 10% Bamboo, 5% Chinese Knot	58"	207	SATIN BLACK	GRAY	DARK LINEN	BLACK
YW-018	ELEGANZA LIGHT	B	85% Flax, 10% Bamboo, 5% Chinese Knot	58"	207	SILVER GRAY	GRAY	DARK LINEN	BRONZE
ZH-155	FICELLE*	A	80% Flax, 20% Cotton	58"	110	IVORY/MARBLE	NATURAL	SOFT WHITE	BEIGE
ZH-191	LINEA	A	90% Flax, 10% Bamboo	58"	210	SILVER GRAY	NATURAL/GRAY	SOFT WHITE	BEIGE/GRAY
ZH-186	MILLA ECRU	B	60% Flax, 20% Bangladesh Hemp, 20% Bamboo	66"	390	IVORY/MARBLE	BEIGE	BEIGE	BEIGE
ZH-187	MILLA GRAPHITE	B	60% Flax, 40% Bamboo	66"	420	BRONZE	BEIGE	DARK LINEN	BRONZE
ZH-183	MILLA ONYX	B	60% Flax, 40% Bamboo	66"	390	SATIN BLACK	GRAY	DARK LINEN	BLACK
ZH-162	MUSLIN DUSK	A	90% Flax, 10% Hemp	58"	110	SATIN BLACK	GRAY	DARK LINEN	BLACK
ZH-161	MUSLIN STONE	A	90% Flax, 10% Hemp	58"	210	SILVER GRAY/MARBLE	GRAY/BEIGE	SOFT WHITE	GRAY/BEIGE
ZH-160	MUSLIN SUNSET	A	90% Flax, 10% Hemp	58"	210	DARK TAUPE	GRAY	DARK LINEN	BRONZE
ZH-157	OSTIA BLACK	B	60% Flax, 40% Bamboo	66"	300	SATIN BLACK	GRAY	DARK LINEN	BLACK
ZH-159	OSTIA ECRU	B	60% Flax, 40% Bamboo	66"	300	IVORY/MARBLE	NATURAL	SOFT WHITE	BEIGE
ZH-158	OSTIA OLIVE	B	60% Flax, 40% Bamboo	66"	300	SILVER GRAY	GRAY	DARK LINEN	GRAY/BRONZE
ZH-029	RIVIERA IVORY	I	80% Flax, 10% Jute, 10% Bamboo	58"	210	MARBLE	BEIGE	SOFT WHITE/BEIGE	BEIGE
ZH-060	UMBRIA CHALK	I	90% Flax, 10% Jute	58"	110	MARBLE	BEIGE	SOFT WHITE	BEIGE
ZH-062	UMBRIA MIST	I	90% Flax, 10% Jute	58"	110	SILVER GRAY	GRAY	DARK LINEN	GRAY
ZH-061	UMBRIA SAND	I	90% Flax, 10% Jute	58"	110	MARBLE	BEIGE	BEIGE	BEIGE

* Attached liners should be ordered with ribs to ensure that the shades fold evenly.

MATERIALS REFERENCE



Edge Bindings

EB #	EB NAME	COMPOSITION	WEIGHT (g/m ²)
E1	IVORY	20% Silk, 80% Cotton	120
E2	MARBLE	20% Silk, 80% Cotton	120
E3	SILVER GRAY	20% Silk, 80% Cotton	120
E4	PALE JADE	20% Silk, 80% Cotton	120
E5	PEWTER	5% Silk, 10% Cotton, 85% Polyester	120
E6	COPPER TEAL	20% Silk, 80% Cotton	120
E7	BRONZE	20% Silk, 80% Cotton	120
E8	SABLE	20% Silk, 80% Cotton	120
E9	DARK TAUPE	5% Silk, 10% Cotton, 85% Polyester	120
E10	SATIN BLACK	5% Silk, 10% Cotton, 85% Polyester	120

Liners

LINER #	LINER COLOR NAME	COMPOSITION	WEIGHT (g/m ²)
PRIVACY LINERS			
LF 01	LF NATURAL	100% Cotton	110
LF 02	LF BEIGE	100% Cotton	110
LF 03	LF ESPRESSO	100% Cotton	110
LF 04	LF GRAY	100% Cotton	110
BLACKOUT LINERS			
B 01	B/O SOFT WHITE	20% Cotton, 80% Poly	350
B 02	B/O BEIGE	100% Cotton	350
B 03	B/O DARK LINEN	10% Cotton, 90% Poly	350

SHADE STYLES AND OPTIONS

FABRIC SELECTION

The Materials Reference table provides useful technical information about each fabric and also identifies which price chart you should use. Coordinated edge binding, liner and wand colors are also listed for each fabric.

The maximum width for shades to be made with a cord lock is listed by fabric on the Materials table. Above these widths, shades must be made with a clutch or other control option, and the appropriate surcharge should be added to the cost of the shade.

SHADE STYLES

Cambrai shades come in two basic shade styles: standard and waterfall.

STANDARD SHADES

Standard shades have a 7-inch valance on the front and the lift cord or chain loop is positioned in front of the shade. The material will rise in folds when the shade is raised.

Cambrai shades will be made with a flat sewn-in bottom bar, unless hold down brackets are ordered, in which case a round bottom bar will be used.

WATERFALL SHADES

Waterfall shades have no valance and the shade comes off the front of the head rail in a flat panel, which will rise in folds when the shade is raised. Cords are hidden behind the shade.

Back valances for waterfall shades are available upon request and can be ordered in either the shade fabric or liner fabric for lined shades.



Back Valance
made from shade fabric



Back Valance
made from liner fabric



Waterfall Shade
without valance; cords behind

SHADE STYLES AND OPTIONS

STANDARD CORD CONTROL

Unless alternative controls are selected, Cambrai shades will be finished with a cord lock and pulleys for the lift cords. Each shade will have one lift cord at the front of the shade; the other lift cords will be collected in a breakaway tassel.

For standard shades with a valance and the cords in front, breakaway tassels and the multiple cords are not visible when the shade is lowered. Breakaway tassels are color-coordinated to the shade material.



Breakaway Tassel

EDGE BINDING

Edge bindings will be sewn down both sides of the shade and both sides of the valance. Edge bindings are not applied to the bottom of the shade or the bottom of the valance.

All edge bindings will be approximately 1/2" wide on the face of the shade.



Edge Binding

VALANCE RETURNS

All outside mount shades will be supplied with valance returns. Inside mount returns are also available free of charge if requested at the time an order is placed.

Standard valance returns are made using the shade material. Valance returns can also be made using edge binding material upon request.

Standard valance return height will be 1 1/2" less than the valance height. This length will keep the rolled bottom of the valance from interfering with the return.

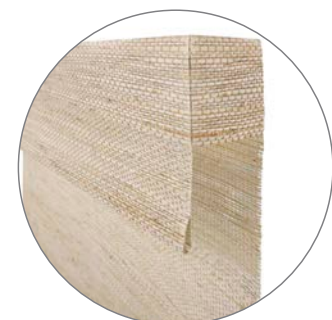
Optional short valance returns are 2 1/2". This covers the end of the head rail and hides the components, keeping the stack of the raised shade away from the returns. Short valance returns are available for cord lock, cordless and remote control options.

Custom valance return lengths are available to be ordered upon request.

All valance returns will be made with an L-shaped connector to attach to the back of the valance. This holds the returns in place and creates a clean, finished corner.



Standard Valance Returns



Optional 2 1/2" Valance Returns

SHADE STYLES AND OPTIONS

TOP-DOWN BOTTOM-UP

Top-down bottom-up (TDBU) shades can be raised from the bottom or lowered from the top. This is accomplished with two separate sets of control cords positioned at opposite sides of the shade. To conceal the cord locks and pulleys each shade will be finished with a lined valance. Outside mount TDBU shades will be made with a valance that is $\frac{3}{4}$ " wider than the ordered shade width. This will allow the returns to fit behind the valance.

The maximum width for TDBU shades is 84" and controls are always positioned on opposite sides. Top-down bottom-up shades are not available in waterfall style.

SURCHARGE OPTIONS

There are many options available to further customize the style, function and operation of your shades. The following pages include option details; pricing is found on page 15.

Your choice for shade operation also changes the finished look; options include: a smooth clutch and continuous chain loop, cordless operation, or motorization with either remote or wand control. Liners are available with or without ribs, and can be movable (twin shade). Two or three shades can be placed on one head rail, and two of the shades can be controlled together with a single clutch.

CLUTCH CONTROLS

Clutches come with a nickel-plated continuous chain loop and provide an assisted lift for large or heavy shades.

All chain loops must be secured to the wall to prevent the loop from becoming a strangulation hazard to small children or pets. All clutch shades will be shipped with chain tensioners for the chain loops.

It is important when measuring for clutch shades that a suitable location for the chain tensioner is identified and the length of the chain drop measured to this location.

Chain loops can be specified in length to the nearest inch. If no length is specified, they will be supplied at two-thirds of the shade height.

The chain tensioner requires a flat surface 2 $\frac{1}{2}$ " long and 1 $\frac{1}{4}$ " wide.

The stack thickness on longer shades can interfere with both chain loop operation and chain tensioner installation, particularly for outside mount applications. We recommend ordering clutch control shades "chain adjacent"; this means the head rail and valance will be made $\frac{5}{8}$ " wider than the shade on the control side allowing the chain to hang to the side of the shade. Please specify when ordering if you would like the shade to be completed as "chain adjacent."



Clutch Lift System
with continuous chain loop



Chain Tensioner

SURCHARGE OPTIONS

CORDLESS SHADES

Cordless shades operate with no lift cords on the front of the shade. The shade is lowered by pulling on the hem bar. A spring control system located under the wooden head rail holds the shade in place at the desired position.

Clear grips are added to the hem bar of cordless shades; one per shade up to 72" wide and two for wider shades.

The cordless option is not available on Top-Down Bottom-Up shades; hold down brackets cannot be used with cordless shades.

Cordless shades are available up to 96" wide and 96" long and will be mounted on a standard head rail (see Specifications for details).



Cordless Shade
with valance

FABRIC-WRAPPED HEAD RAIL

Fabric-wrapped head rails offer a decorative finishing touch. The ends of the head rail are also covered.

LINERS

Liners are secured under the edge binding on the back of the shade. If a shade is lined, the valance will automatically be lined with the same liner style and color.

Liners are available with or without ribs. Ribs create a finished roman shade look to the back of the shade and also help the softer fabrics rise more evenly in uniform folds. All movable liners (or twin shades) will be made with ribs.

For certain fabrics, we always recommend ordering attached liners with ribs. Please see the Materials Reference table on page 3 for details.



Fabric-Wrapped Head Rail

MOVABLE LINERS

Shades with movable liners (or twin shades) are shades with a separate, operable liner and two sets of controls: one for the Cambrai shade in front and one for the liner shade behind. Controls can be on the same side or on opposite sides of the shade; if not specified, they will be on the same side.

Controls can also be a mix of cord locks and clutches. Cord controls for the liner shade will always be positioned behind the front shade.

Outside mount twin shades will be made with a valance that is $\frac{3}{4}$ " wider than the ordered shade width. This will allow the returns to fit behind the valance.

Twin shades have deeper head rails to accommodate the dual sets of controls (see Specifications for details).



Twin Shade
(movable liner)

SURCHARGE OPTIONS

MULTIPLE SHADES ON ONE HEAD RAIL

Cambrai shades are available with 2-on-1 or 3-on-1 head rail. The maximum total width is 115" and the gap between shades will be no more than 1/2". The maximum width for a common valance is 96"; wider valances will be made in sections to match the individual shade widths.

Cord locks, clutches, cordless controls and motorization (wand or remote) can be used for these shades. Pay careful attention to make sure there are suitable locations for chain tensioners or cord cleats when specifying multiple shades on one head rail, particularly for the middle shade in 3-on-1 head rail units.

It is possible to operate two shades with just one clutch. A 2-on-1 shade can be specified with only one control on one side of the head rail. A 3-on-1 shade can be specified with only two controls, one on each side of the head rail.

REMOTE CONTROL SHADES

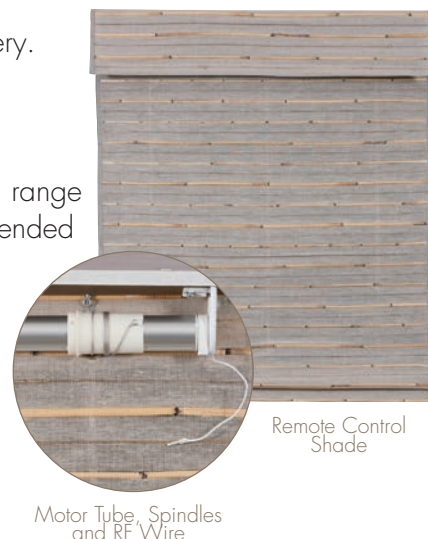
Remote control motorized shades are powered by an internal lithium-ion battery. Operation of the shade is controlled by either a single- or multi-channel radio frequency remote.

The single-channel remote can operate up to 20 shades in one group, with a range of about 100 feet. The multi-channel remote has 15 channels and is recommended to operate shades of different lengths. Wall switches are also available.

The Connector Motor Hub brings automated capabilities to remote control motorized shades. Hubs operate through your wi-fi network and allow shade operation through smart phone and smart home technologies.

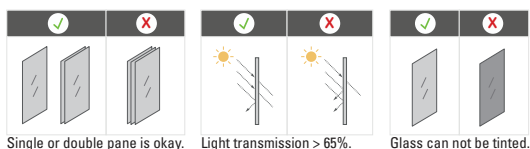
The motor battery is recharged using an AC power adaptor, which plugs into a port in the motor head. A solar panel charger alternative is also available; once properly installed it is a permanent power source.

See restrictions below.

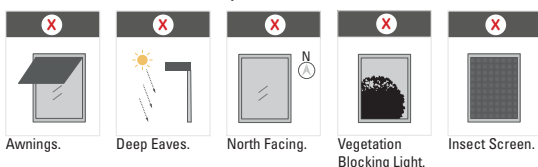


SOLAR PANEL RESTRICTIONS:

Check your window type.



Do not use solar panels under these conditions.



Remote Control
(single channel)



Charging Port in Motor
Head



Connector Motor Hub



Solar RC Charger

SURCHARGE OPTIONS

WAND CONTROL SHADES

Wand control motorized shades are powered by the same internal lithium-ion battery as remote control shades. The motor is controlled using a wand, which hangs down to the side of the shade.

Waterfall shades cannot be ordered with wand controls.

Wands come in four lengths: 24", 36", 48" and 60". Available colors include: white, beige, gray, black and bronze. See image on page 15.

Wand control shade motor batteries are recharged via a mini USB power adaptor which plugs into the end of the wand.

Motorized shades will be mounted on a deeper head rail (see Specifications for details).

All wand control shades are made with the head rail and valance $\frac{5}{8}$ " wider than the shade fabric on the control side allowing the wand to hang to the side of the shade. This may cause a light gap on the control side of inside mount black-out shades.



Wand Control
with USB power adaptor

OUTSIDE MOUNT

The shade fabric will be made at the ordered width.

The head rail and valance will be **$\frac{5}{8}$ "** wider on the control side.



Outside Mount
wand control shade

INSIDE MOUNT

The shade, head rail and valance will be made with a $\frac{3}{8}$ " IB deduction.

The shade fabric will be cut an extra **$\frac{5}{8}$ "** narrower on the control side.



Inside Mount
wand control shade

SPECIFICATIONS

	MINIMUM WIDTH	MAXIMUM WIDTH	MINIMUM HEIGHT	MAXIMUM HEIGHT	IB DEDUCTION (WIDTH)	FLUSH IB DEPTH (top mount w/brkt)	MINIMUM IB DEPTH (top mount w/brkt)
STANDARD (CORDED)	12"	*	18"	108"	$\frac{3}{8}$ "	2½" **	¾"
NARROW HEAD RAIL (CORDED)	12"	*	18"	108"	$\frac{3}{8}$ "	2" **	¾"
CLUTCH and CHAIN	18"	96"	18"	108"	$\frac{3}{8}$ "	2½" **	¾"
CORDLESS	18"	96"	18"	96"	$\frac{3}{8}$ "	2½" **	¾"
STANDARD TWIN	12"	96"	18"	108"	$\frac{3}{8}$ "	3½" **	
TOP-DOWN BOTTOM-UP (TDBU)	12"	84"	18"	108"	$\frac{3}{8}$ "	2½" **	¾"
REMOTE CONTROL	23"	96"	18"	108"	$\frac{3}{8}$ "	3½" **	¾"
WAND CONTROL	23"	96"	18"	108"	$\frac{3}{8}$ "	3½" **	¾"
MULTIPLE SHADES ON ONE HEAD RAIL	—	115" total width	—	—	—	—	—
COMMON VALANCE	—	96"	—	—	—	—	—

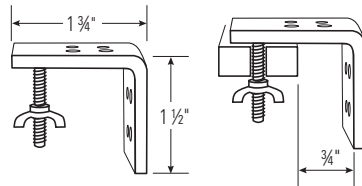
* See Materials Reference table for maximum width when shade finished with cord control.

** Exact flush inside mount depths will vary slightly based upon the thickness of the fabric.

BRACKET DIMENSIONS

Height: 1½"

Depth: 1¾"



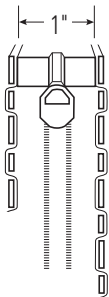
STACK HEIGHT

Ring spacing: 7"

Stack height (all lengths): 8" to 10"

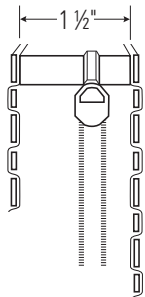
HEAD RAIL DIMENSIONS

Middle support brackets will be supplied for all shades over 41" wide.



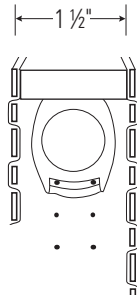
NARROW HEAD RAIL (Custom Order Only)

- Standard Shades
- Waterfall Shades
- TDBU

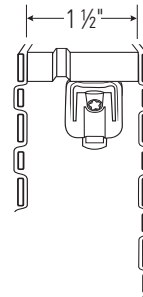


STANDARD HEAD RAIL

- Standard Shades
- Waterfall Shades
- TDBU

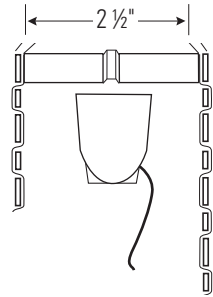


CLUTCH SHADE with Continuous Chain Loop



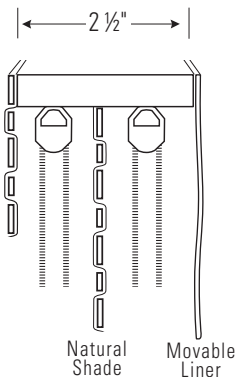
CORDLESS HEAD RAIL

- Standard Shades
- Waterfall Shades

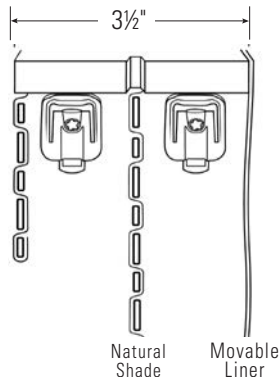


MOTORIZED HEAD RAIL

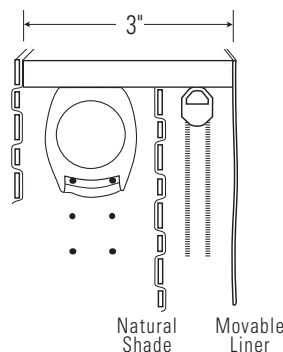
- Standard Shades
- Waterfall Shades
- Wand or Remote Control



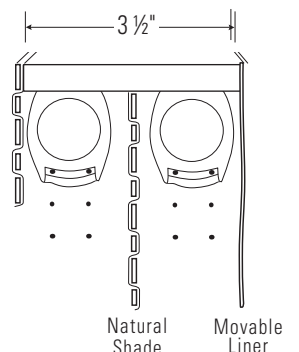
STANDARD TWIN SHADE Controls Same Side (shown) or Opposite Sides



TWIN SHADE w/ CORDLESS



TWIN SHADE w/ CLUTCH (Clutch Control on Front Shade Only) Controls Same Side (shown) or Opposite Sides



TWIN SHADE w/ TWO CLUTCHES Controls Same Side (shown) or Opposite Sides

ROMAN SHADE PRICING | Price Group I

Prices for standard roman shade (with valance and cords in front) or waterfall roman shade (no valance and cords behind).

Price Group I		WIDTH										
		24"	30"	36"	42"	48"	54"	60"	72"	78"	84"	96"
ARRAS SAGE ARRAS STONE ARRAS WALNUT RIVIERA IVORY UMBRIA CHALK UMBRIA MIST UMBRIA SAND	24"	\$98	\$118	\$139	\$160	\$180	\$201	\$222	\$263	\$284	\$304	\$345
	30"	\$120	\$145	\$171	\$196	\$222	\$247	\$272	\$323	\$349	\$374	\$425
	36"	\$142	\$172	\$202	\$233	\$263	\$293	\$323	\$384	\$414	\$444	\$504
	42"	\$164	\$199	\$234	\$269	\$304	\$339	\$374	\$444	\$479	\$514	\$584
	48"	\$186	\$226	\$266	\$306	\$345	\$385	\$425	\$504	\$544	\$584	\$663
	54"	\$209	\$253	\$298	\$342	\$387	\$431	\$476	\$565	\$609	\$654	\$743
	60"	\$231	\$280	\$329	\$379	\$428	\$477	\$527	\$625	\$674	\$724	\$822
	72"	\$275	\$334	\$393	\$452	\$510	\$569	\$628	\$746	\$805	\$864	\$981
	78"	\$297	\$361	\$424	\$488	\$552	\$615	\$679	\$806	\$870	\$933	\$1,061
	84"	\$319	\$388	\$456	\$525	\$593	\$661	\$730	\$867	\$935	\$1,003	\$1,140
	96"	\$364	\$442	\$520	\$598	\$676	\$754	\$831	\$987	\$1,065	\$1,143	\$1,299
	108"	\$409	\$497	\$585	\$672	\$760	\$848	\$935	\$1,111	\$1,198	\$1,286	\$1,462

Prices include narrow width edge binding.

NOTE: Check selected pattern for maximum width when shade made with a cord lock. Wider shades must be made with a clutch or other control option.



ARRAS SAGE
58" max width with Cord Lock



ARRAS STONE
58" max width with Cord Lock



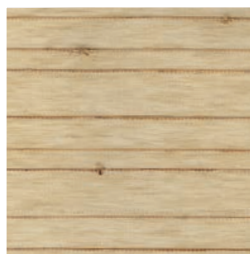
ARRAS WALNUT
58" max width with Cord Lock



RIVIERA IVORY
58" max width with Cord Lock



UMBRIA CHALK
58" max width with Cord Lock



UMBRIA MIST
58" max width with Cord Lock



UMBRIA SAND
58" max width with Cord Lock

ROMAN SHADE PRICING | Price Group A

Prices for standard roman shade (with valance and cords in front) or waterfall roman shade (no valance and cords behind).

Price Group A		LENGTH	WIDTH										
			24"	30"	36"	42"	48"	54"	60"	72"	78"	84"	96"
ARUNDO DUSK	24"		\$122	\$148	\$174	\$200	\$225	\$251	\$277	\$329	\$354	\$380	\$432
ARUNDO ECRU	30"		\$150	\$182	\$213	\$245	\$277	\$309	\$341	\$404	\$436	\$468	\$531
ARUNDO STONE	36"		\$178	\$215	\$253	\$291	\$329	\$366	\$404	\$480	\$517	\$555	\$630
ARUNDO SUNSET	42"		\$205	\$249	\$293	\$336	\$380	\$424	\$468	\$555	\$599	\$642	\$730
CARRE DUSK	48"		\$233	\$283	\$332	\$382	\$432	\$481	\$531	\$630	\$680	\$730	\$829
CARRE EARTH	54"		\$261	\$316	\$372	\$428	\$483	\$539	\$595	\$706	\$762	\$817	\$929
CARRE ECRU	60"		\$288	\$350	\$412	\$473	\$535	\$597	\$658	\$781	\$843	\$905	\$1,028
CHAMBRAY DUSK	72"		\$344	\$417	\$491	\$565	\$638	\$712	\$785	\$932	\$1,006	\$1,079	\$1,227
CHAMBRAY ECRU	78"		\$372	\$451	\$531	\$610	\$690	\$769	\$849	\$1,008	\$1,087	\$1,167	\$1,326
CHAMBRAY STONE	84"		\$399	\$485	\$570	\$656	\$741	\$827	\$912	\$1,083	\$1,169	\$1,254	\$1,425
FICELLE	96"		\$455	\$552	\$650	\$747	\$844	\$942	\$1,039	\$1,234	\$1,332	\$1,429	\$1,624
LINEA	108"	\$511	\$621	\$731	\$840	\$950	\$1,060	\$1,169	\$1,388	\$1,498	\$1,608	\$1,827	
MUSLIN DUSK													
MUSLIN STONE													
MUSLIN SUNSET													

Prices include narrow width edge binding.

NOTE: Check selected pattern for maximum width when shade made with a cord lock. Wider shades must be made with a clutch or other control option.



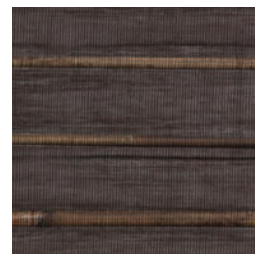
ARUNDO DUSK
66" max width with Cord Lock



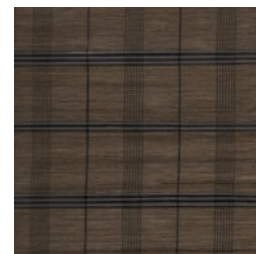
ARUNDO ECRU
66" max width with Cord Lock



ARUNDO STONE
66" max width with Cord Lock



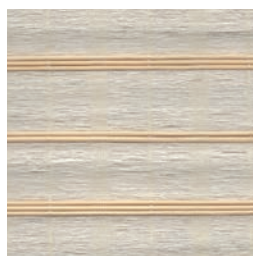
ARUNDO SUNSET
66" max width with Cord Lock



CARRE DUSK
66" max width with Cord Lock



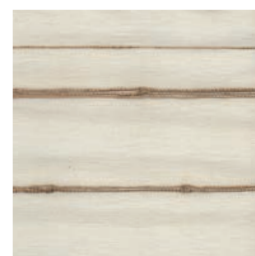
CARRE EARTH
66" max width with Cord Lock



CARRE ECRU
66" max width with Cord Lock



CHAMBRAY DUSK
58" max width with Cord Lock
Ribbed liner recommended.



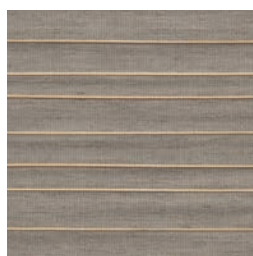
CHAMBRAY ECRU
58" max width with Cord Lock
Ribbed liner recommended.



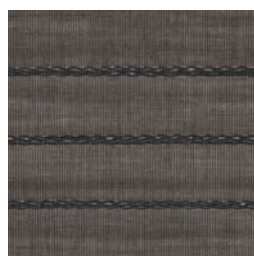
CHAMBRAY STONE
58" max width with Cord Lock
Ribbed liner recommended.



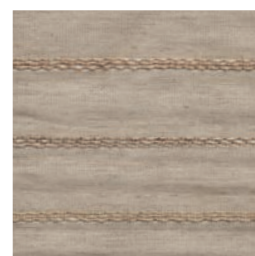
FICELLE
58" max width with Cord Lock
Ribbed liner recommended.



LINEA
58" max width with Cord Lock



MUSLIN DUSK
58" max width with Cord Lock



MUSLIN STONE
58" max width with Cord Lock



MUSLIN SUNSET
58" max width with Cord Lock

ROMAN SHADE PRICING | Price Group B

Prices for standard roman shade (with valance and cords in front) or waterfall roman shade (no valance and cords behind).

Price Group B		LENGTH	WIDTH										
			24"	30"	36"	42"	48"	54"	60"	72"	78"	84"	96"
BATISTE DARK	24"		\$133	\$162	\$190	\$219	\$247	\$276	\$304	\$361	\$390	\$418	\$475
BATISTE LIGHT	30"		\$164	\$199	\$234	\$269	\$304	\$339	\$375	\$445	\$480	\$515	\$586
ELEGANZA DARK	36"		\$194	\$236	\$278	\$319	\$361	\$403	\$445	\$529	\$570	\$612	\$696
ELEGANZA LIGHT	42"		\$224	\$273	\$321	\$370	\$418	\$467	\$515	\$612	\$661	\$709	\$806
MILLA ECRU	48"		\$255	\$310	\$365	\$420	\$475	\$530	\$586	\$696	\$751	\$806	\$916
MILLA GRAPHITE	54"		\$285	\$347	\$409	\$471	\$532	\$594	\$656	\$780	\$841	\$903	\$1,027
MILLA ONYX	60"		\$316	\$384	\$453	\$521	\$589	\$658	\$726	\$863	\$932	\$1,000	\$1,137
OSTIA BLACK	72"		\$377	\$458	\$540	\$622	\$704	\$785	\$867	\$1,030	\$1,112	\$1,194	\$1,357
OSTIA ECRU	78"		\$407	\$495	\$584	\$672	\$761	\$849	\$937	\$1,114	\$1,203	\$1,291	\$1,468
OSTIA OLIVE	84"		\$437	\$532	\$627	\$723	\$818	\$913	\$1,008	\$1,198	\$1,293	\$1,388	\$1,578
	96"		\$498	\$607	\$715	\$823	\$932	\$1,040	\$1,148	\$1,365	\$1,473	\$1,582	\$1,798
	108"		\$561	\$682	\$804	\$926	\$1,048	\$1,170	\$1,292	\$1,536	\$1,658	\$1,779	\$2,023

Prices include narrow width edge binding.

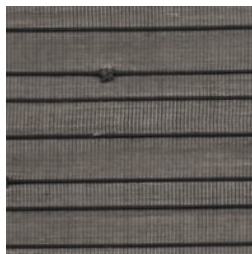
NOTE: Check selected pattern for maximum width when shade made with a cord lock. Wider shades must be made with a clutch or other control option.



BATISTE DARK
58" max width with Cord Lock
Ribbed liner recommended.



BATISTE LIGHT
58" max width with Cord Lock
Ribbed liner recommended.



ELEGANZA DARK
58" max width with Cord Lock



ELEGANZA LIGHT
58" max width with Cord Lock



MILLA ECRU
66" max width with Cord Lock



MILLA GRAPHITE
66" max width with Cord Lock



MILLA ONYX
66" max width with Cord Lock



OSTIA BLACK
66" max width with Cord Lock



OSTIA ECRU
66" max width with Cord Lock



OSTIA OLIVE
66" max width with Cord Lock

SHADE OPTION PRICING

STYLE OPTIONS

2-ON-1 HEAD RAIL: **ADD \$28**

Price as two separate shades and add the surcharge.

3-ON-1 HEAD RAIL: **ADD \$43**

Price as three separate shades and add the surcharge.

CORDLESS:

Up to 48" width: **ADD \$65**

Up to 72" width: **ADD \$80**

Over 72" width: **ADD \$100**

TDBU: **ADD \$30**

FABRIC-WRAPPED HEAD RAIL (no returns): **ADD \$60**

CLUTCH (WIDTH)

24"	30"	36"	42"	48"	54"	60"	72"	78"	84"	96"
\$86	\$86	\$91	\$91	\$97	\$97	\$103	\$109	\$114	\$120	\$126

WAND CONTROL SHADES

WAND CONTROL MOTOR: **\$157 (includes Wand)**

* USB CHARGER FOR WAND MOTOR: **\$30**



Wand Control Colors:
White, Beige, Gray, Bronze and Black



Mini USB Wand Charger

REMOTE CONTROL SHADES

REMOTE CONTROL MOTOR: **\$242**

* STANDARD CHARGER FOR RC MOTOR: **\$30**

* SOLAR CHARGER FOR RC MOTOR: **\$170**



Standard RC Charger



Solar RC Charger

REMOTES

SINGLE-CHANNEL REMOTE: **\$28**

MULTI-CHANNEL REMOTE: **\$57**



Single-Channel
Remote



Multi-Channel
Remote

WALL SWITCHES

SINGLE-CHANNEL WIRELESS SWITCH: **\$60**

MULTI-CHANNEL WIRELESS SWITCH: **\$77**



Single-Channel
Wall Switch



Multi-Channel
Wall Switch

CONNECTOR MOTOR HUB: **\$300**

* Chargers are not included with motorized wand or remote control shades; please identify desired quantity when placing order.



Connector
Motor Hub

PRO DESIGN NATURAL SHADE WARRANTY

WHAT IS COVERED BY THIS WARRANTY?

This natural shade is warranted against defects in materials and workmanship, provided that:

1. The product was installed according to the product instructions.
2. Pro Design recommendations were followed regarding limitations and specifications of the product.

Pro Design reserves the right to determine if your shade warrants a repair or partial replacement of any parts. If necessary, Pro Design will replace your shade with a new shade of equal or superior value. This shall be your sole remedy under this warranty.

All motors, controls and accessories are warranted for a period of five years from the date of purchase.

WHO IS COVERED BY THIS WARRANTY?

This warranty applies only to the original retail purchaser with proof of purchase in the USA.

WHAT IS NOT COVERED BY THIS WARRANTY?

Your Pro Design natural shade is made from natural materials, which will show natural variations in color, texture and weave. They may also show some fading and discoloration over time, or cracking, twisting, bowing or stretching and shrinkage due to exposure to direct sunlight or excessive moisture. These are not considered defects for the purposes of this warranty.

This warranty does not cover the removal or installation of original or replacement shades. This warranty does not cover damage or defects caused by, or resulting from improper maintenance, neglect or improper use, wear and tear, abuse, neglect, accidents, alteration, commercial use, installation, removal or reinstallation or exposure to excessive moisture.

Failure to follow the proper installation, charging and use instructions will invalidate the warranty for motors, remotes, wands and hubs.

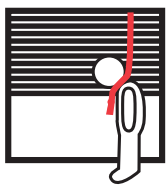
YOUR RIGHTS UNDER STATE LAW

This warranty gives you specific legal rights. You may also have other rights which may vary from State to State. In no event shall Pro Design be liable for incidental or consequential damages or for any other direct or indirect damage, loss, cost, expense or fee. Some states do not allow the exclusion or limitation of incidental or consequential damages, so the above limitation or exclusion may not apply to you. This warranty is exclusive and in lieu of all other obligations, liabilities or warranties.

CAMBRAI
COLLECTION

BEAUTY  CRAFTSMANSHIP  DESIGN

⚠ WARNING

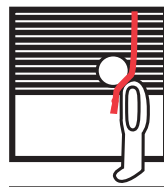


Window Blind Cord Can STRANGLE Your Child.

To prevent strangulation, purchase cordless products or products with inaccessible cords.

ANSI/WCMA 5.1.3

⚠ ADVERTENCIA



La cuerda ciega de la ventana puede ESTRANGULAR su niño.

Para evitar el estrangulamiento, compre alternativas inalámbricas o productos con cables inaccesibles.

ANSI/WCMA 5.1.3